

Title: Kids explorations I

Time: May 2019

Site: CRIR house

Who: JB & NG and kids from Youthclub Sølyst

Tags: Exploration, Kids,

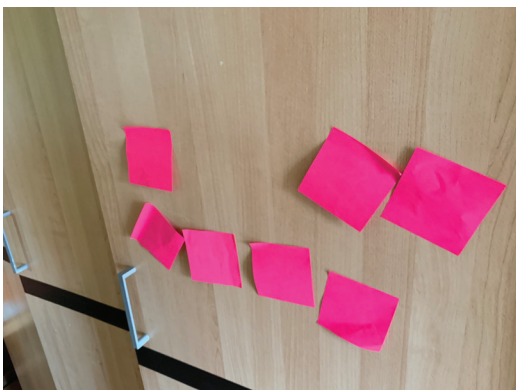
The quick - and intuitive - first reactions. Kids were asked to put a green post it on what they liked and a red (cyan) one on what they disliked. No explanations needed as a starting point



#1 - The big south facing window. View to the trees.

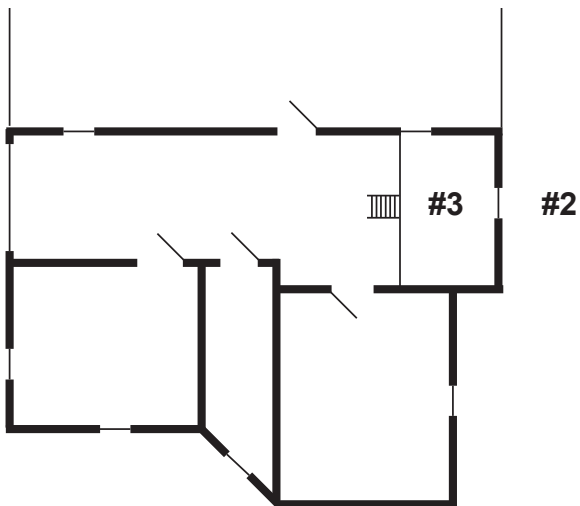


#2 - Mezzanine for sleeping as an offshoot out of the building - Risk of hurting your head



#3 - The boring closet in the bedroom

#1



Title: Kids explorations II	
Time: May 2019	Site: CRIR house
Who: JB & NG and kids from Youthclub Sølyst	
Tags: Exploration, Kids,	

Second exploration with kids using instant photos and adding words to them



#1 - The stairs - Cool - no edges and a bit dangerous. Good with stones as material. Looks good - difficult to build.

It is OK that the handrail is missing?



#2 - The mural - cool mural - many colours



#3 - Mezzanine - Close the door. Private. A cave overground. Cosy!

Title: CRIR kids workshop drawings

Time: May 2019

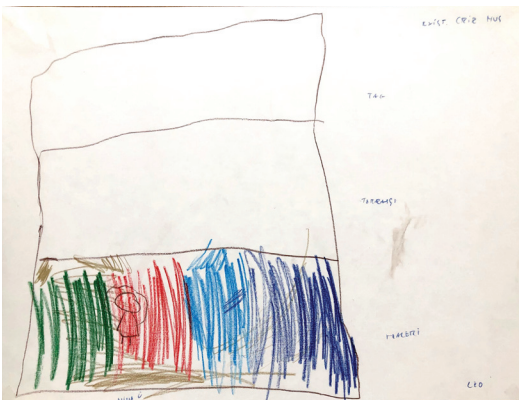
Site: Sølyst Youthclub

Who: Anker, Johan, Sofus, Leo

Tags: Kids, ideas, workshop



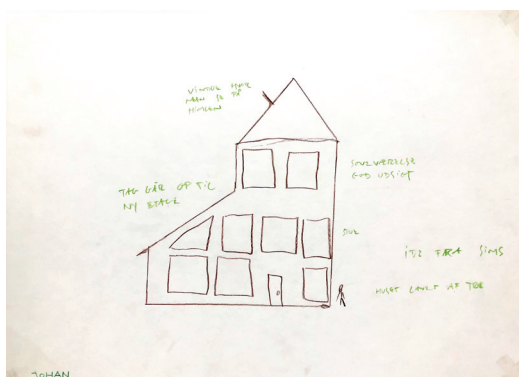
Drawing session with kids. After having explored the existing CRIR house we had a day of drawing ideas for a new CRIR house. See more detailed drawing.



The existing house with the colours of the mural on the base that houses the heating central

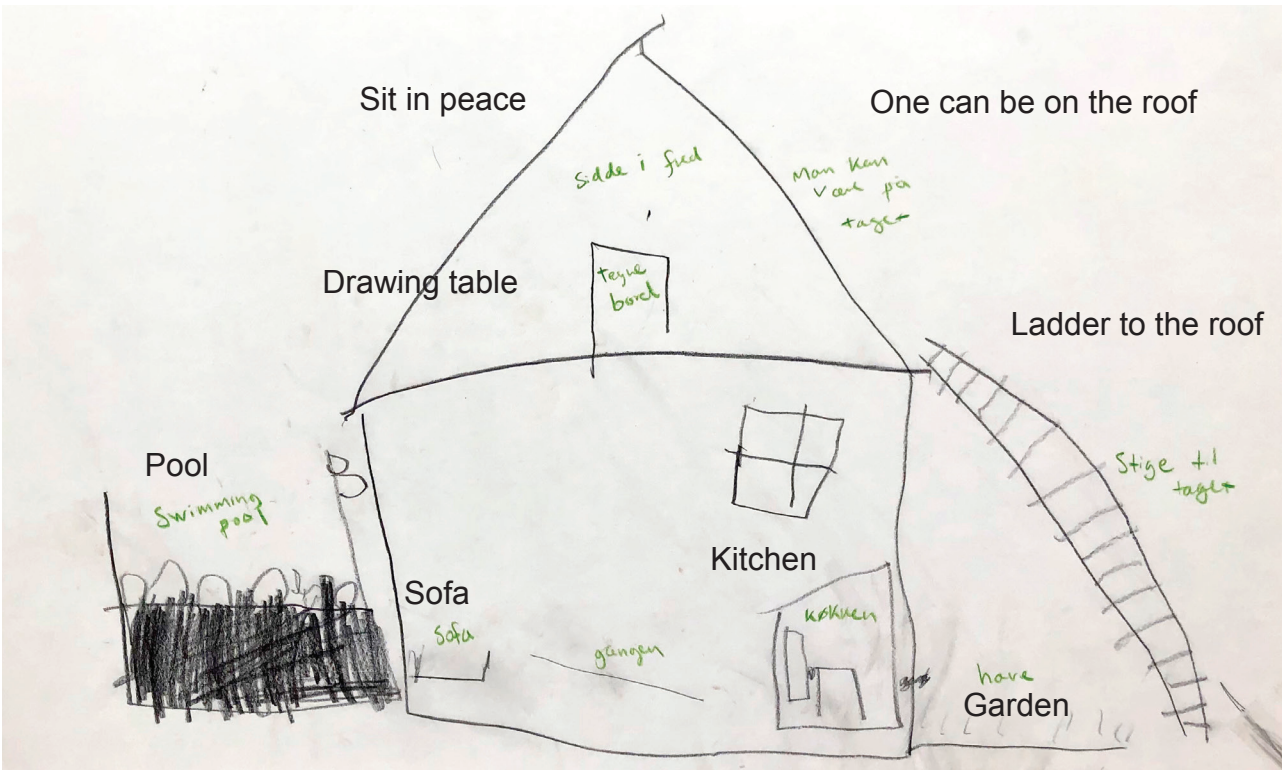


Lots of windows and terrasses. A lamp on the house and

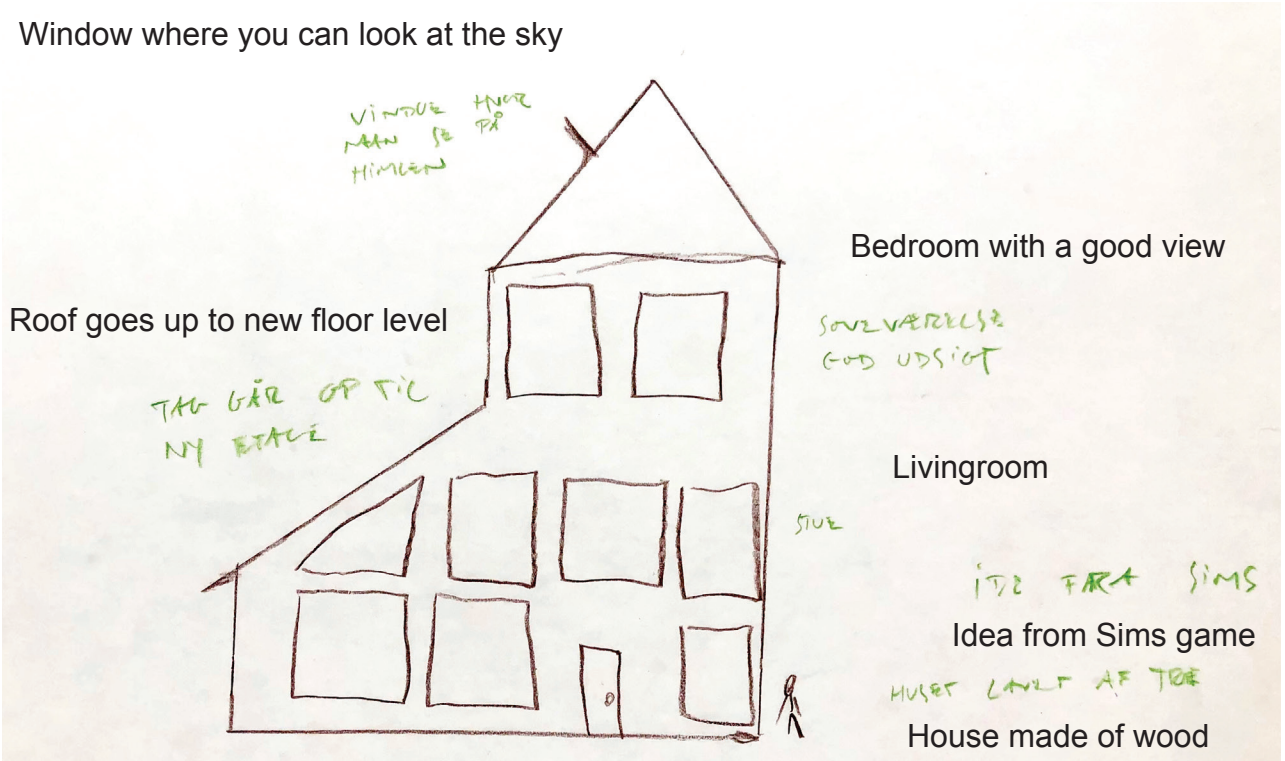


A house inspired by the Sims game. See more detailed drawing

Title: CRIR kids workshop drawing details	
Time: May 2019	Site: Sølyst Youthclub
Who: Anker and Johan	
Tags: Kids, ideas, workshop	



Anker



Johan

Title: CRIR kids workshop Building

Time: June 2019

Site: Sølyst Youthclub

Who: Kids from Sølyst Youthclub

Tags: Kids, ideas, building, workshop



After the drawing session the kids worked with cardboard and build their version of a new CRIR house. Often these model houses were used for a quick inhabitation.



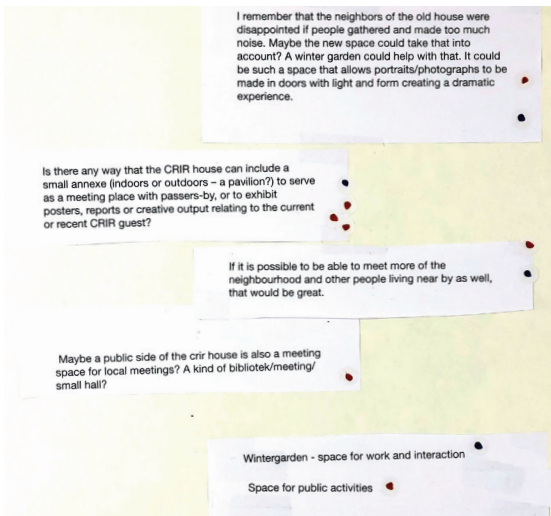
A “completely normal house” where a tower is for a bedroom with both peace and a view. Next to the tower is a space for a pet. The design have been decided along the way and perhaps quite close to the offshoot style of Christiania houses in general.



A series of houses that forms a small town.



The new CRIR house is bigger but keeps the terrace and the mezzanine (a cave for sleeping where you can pop your head out of the window) The model was build on a small wall to take the height difference into account: A firefighters pole inside a tower next to the house.



Title: Crir User feedback	
Time: Feb 2019	Site: onLine
Who: Former users of CRIR	
Tags: Users, Feedback, online	

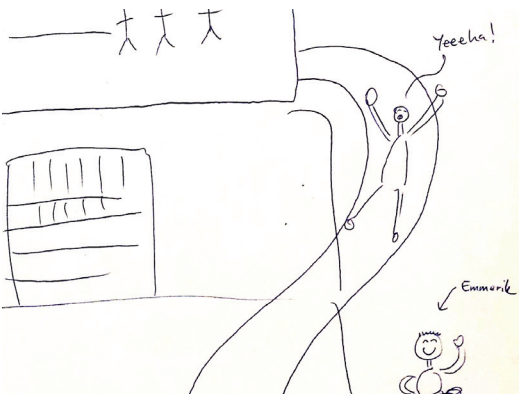
We had the email addresses of 120 former CRIR users and we send out an email to ask them for their experience from using the house. At the workshop in May 2019 we prioritised the feedback



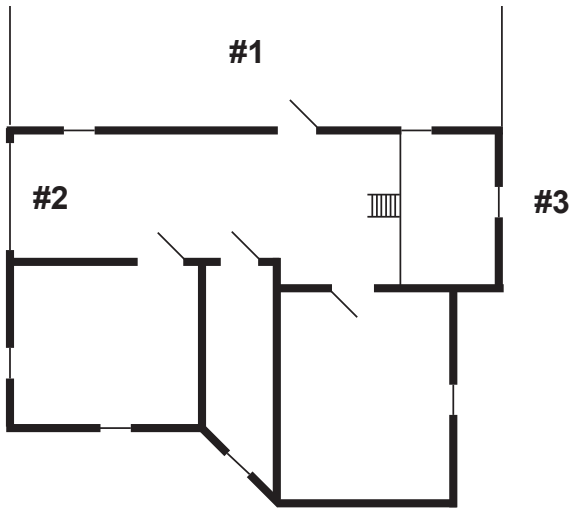
#1 - Design with respect for what is already there. Keep the bohemian spirit. Looks bad from outside but works well from inside. Improvements with charm, quirks and sustainability. Add more space and amenities to make the stay more productive.



#2 - Small annexe as a meeting place or exhibition. A winter garden instead of balcony also to avoid noise - neighbours. Studio with good light



#3 - Slide and watchtower - a informal and playful feeling of the place



Title: CRIR user exploration II	
Time: May 2019	Site: CRIR house
Who: Former CRIR users	
Tags: Users, Exploration, Workshop	

Based on the first individual exploration without words, the next step was small groups each with one instant cameras. The most important observations were selected and commented on.



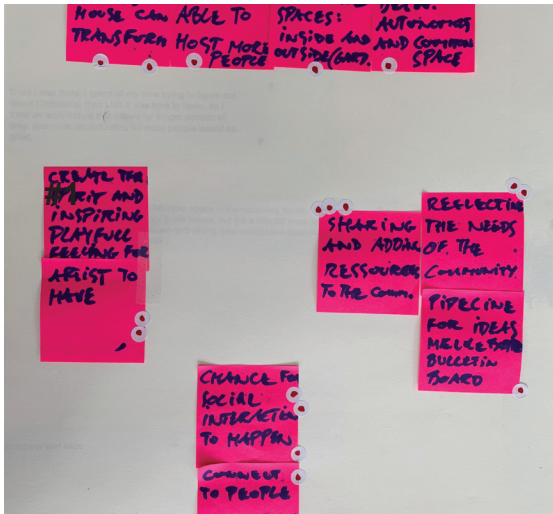
#1 - Terassa with a roof. A good place to have guests but also a problem with noice for the neighbours.



#2 - Big bright window - with a view to the green outside. The window sill is perfect to sit on.

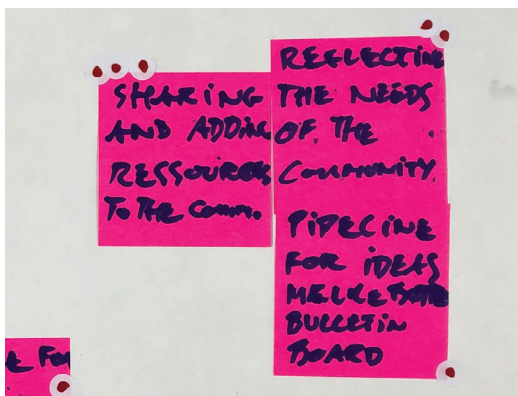


#3 - Stairs up to the house. The slightly dangerous and uninviting stairs also keeps strangers away.

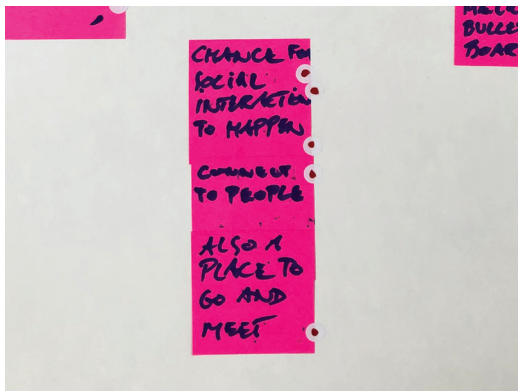


Title: CRIR Users ideas, Workshop	
Time: May 2019	Site: CRIR House
Who: CRIR users	
Tags: Users, Ideas, Workshop	

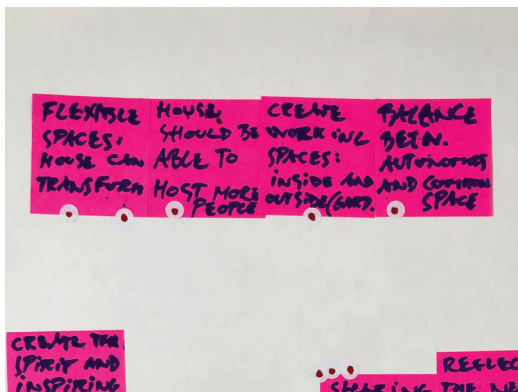
Part of the workshop with users - onSite in the CRIR house - was a classic brainstorm to get new ideas that was grouped and prioritised.



#1 - CRIR should be a more active part of Christiania and Mælkebøtten. Reflecting local needs. Sharing and adding resources to the community



#2 - The new house should have a space for social interaction. More space for family or collaborators. A semipublic space for meetings and exhibitions



#3 - The house should be a flexible space that can transform. Inside and outside workspace. Balance private and public/common space

Title: CRIR users drawings - detail	
Time: May 2019	Site: CRIR house
Who: CRIR Users	
Tags: Users, Workshop, Drawings	

