

Title: CRIR House - 5 obstructions	
Time: May 2020	Site:
Who: CRIR	
Tags: Obstructions, principles, offshoots	

**5 Obstructions** - Is an effort to fix certain elements in order to keep other possibilities open. The concept is inspired by filmdirector Lars von Trier and his collaboration with Jorgen Leth.

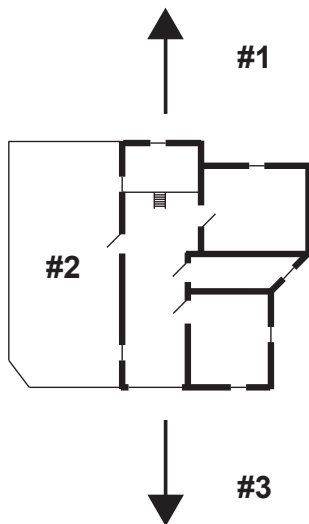
**#1 - Offshoots** - The new building as an offshoot that allows for future offshoots. See the historical layers and the history of the existing CRIR house

**#2 - Principles** - Neighbours, feedback from former CRIR users and kids on Christiania has been boiled down to 6 principles. - see principles: plan and section

**#3 - Building cost** - 2000 EUR a square meter which is a rough average for Christiania

**#4 - Envelope** - Building footprint is maximum 76 square meters. Design with space for families or collaborators. Design zones with privacy and more public zones for workshops, discussions etc.

**#5 - Ressources** - Keeping the environmental footprint small. Use recycled, natural and porous materials. Zero energy house - design with passive/active solar energy.



<b>Title: CRIR principles Plan</b>	
Time: May 2020	Site:
Who: CRIR	
Tags: Users, Feedback, principles	

We have tried to produce a number of principles based on feedback from CRIR users and various workshops



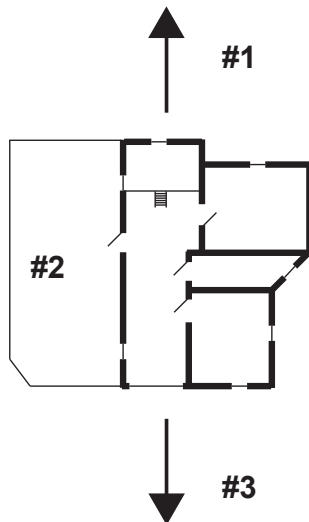
**#1** - More private functions towards northern neighbour. Today the open terassa is sometimes a source of noise



**#2** - The house should have a stronger connection to the rest of CA with a semipublic zone - a winter-garden towards south that can be used for meetings exhibitions and workspace



**#3** - Possible entrance and garden towards south. Today there is a small window in the kitchen to that side.



### Title: CRIR principles Plan - Details

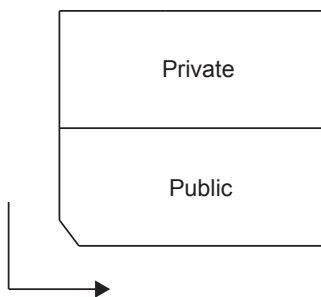
Time: May 2020

Site:

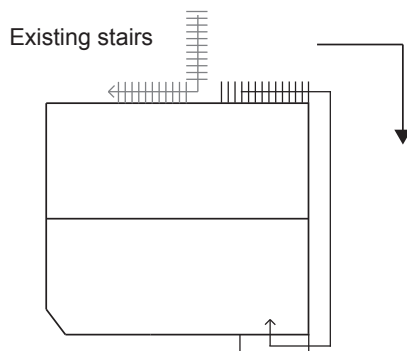
Who: CRIR

Tags: Principles, diagrams

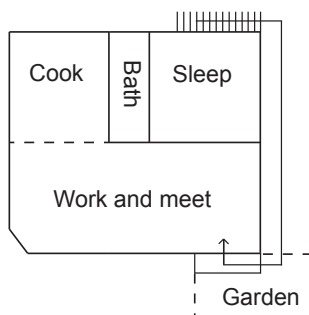
The feedback from CRIR users etc. in a more -  
diagrammatic form



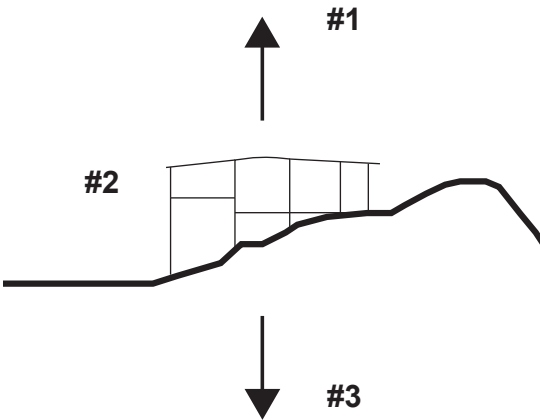
**#1** - The structure is simplified to a (mostly) private and a more public zone - work and meetingspace. This structure is turned 90 degrees to have less noise towards neighbour and a more optimal position towards the sun with a wintergarden character.



**#2** - The access to the house can be moved to the opposite side of the house to allow access directly to the public zone.



**#3** - Some further considerations regarding zones/ functions - entrance and garden to the south



### Title: CRIR Principles Section

Time: May 2020

Site:

Who: CRIR

Tags: Users, feedback, principles

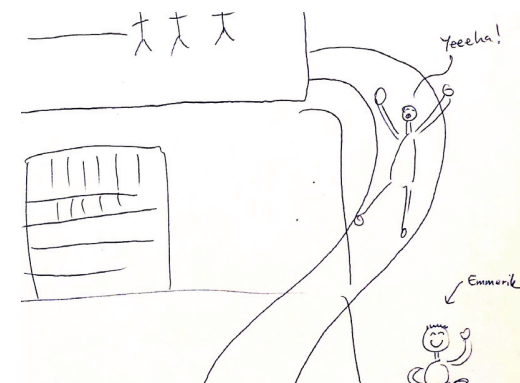
Based on feedback from CRIR and various Workshops, we have tried to narrow down a number of principles.



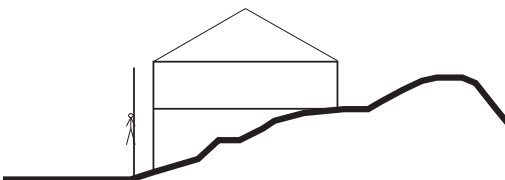
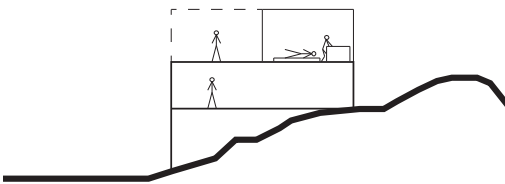
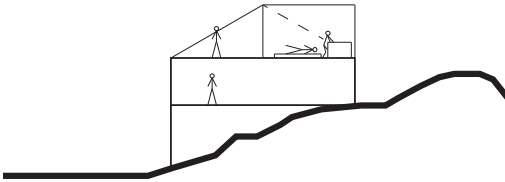
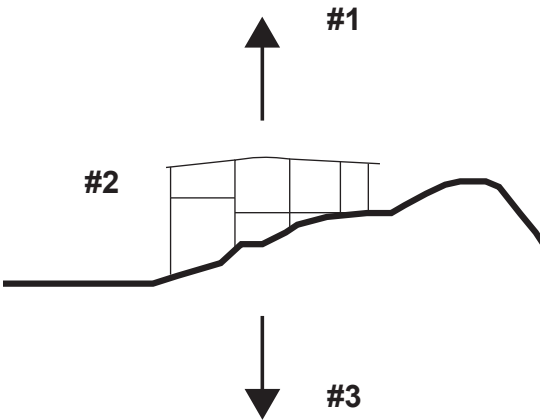
**#1** - A mezzanine or room under the roof for sleeping - and looking at the stars - or a more secluded workspace



**#2** - Better amenities and more space for bringing a family or colleagues



**#3** - Using the height difference - a slide or a firemans pole?



## Title: CRIR Principles Section - Details

Time: May 2020

Site:

Who: CRIR

Tags: Principles, diagrams

Diagrams to illustrate some of the principles on how to use the height difference and functions under the roof.

**#1** - A descreet roof - pyramid shaped - with a roof terrassa and a smaller space for work or sleep with a window towards the lake.

**#2** - A more bold - pitched - roof with a larger te-rassa and space for sleeping and/or working with a window towards the lake

**#3** - Using the height difference - a slide or a fire-fighter pole?